



# SANWatch Configurations for Remote Replication on EonStor DS

Application Note

## ***Abstract***

This application note introduces the remote replication function on EonStor DS storage systems and describes relevant settings in the SANWatch management software.



## **Table of Contents**

<b>EonStor DS .....</b>	<b>3</b>
<b>Remote Replication Function .....</b>	<b>4</b>
<b>System Configurations in SANWatch (EonStor DS Management Software).....</b>	<b>5</b>



## EonStor DS

The EonStor DS storage solution features advanced hardware design and provides comprehensive data services at affordable price points, making it an ideal storage solution for small and medium businesses (SMBs).

EonStor DS provides excellent data protection to ensure the highest data availability for the storage area network (SAN) and direct attached storage (DAS). Combined with modular architecture, thin provisioning, easy and intuitive management and exceptional price-performance, EonStor DS brings price-conscious businesses a decisive competitive edge by making IT efficiency keep up with growing storage needs.

For more information about Infortrend's EonStor DS storage systems, please visit our website: <http://www.infortrend.com/>.

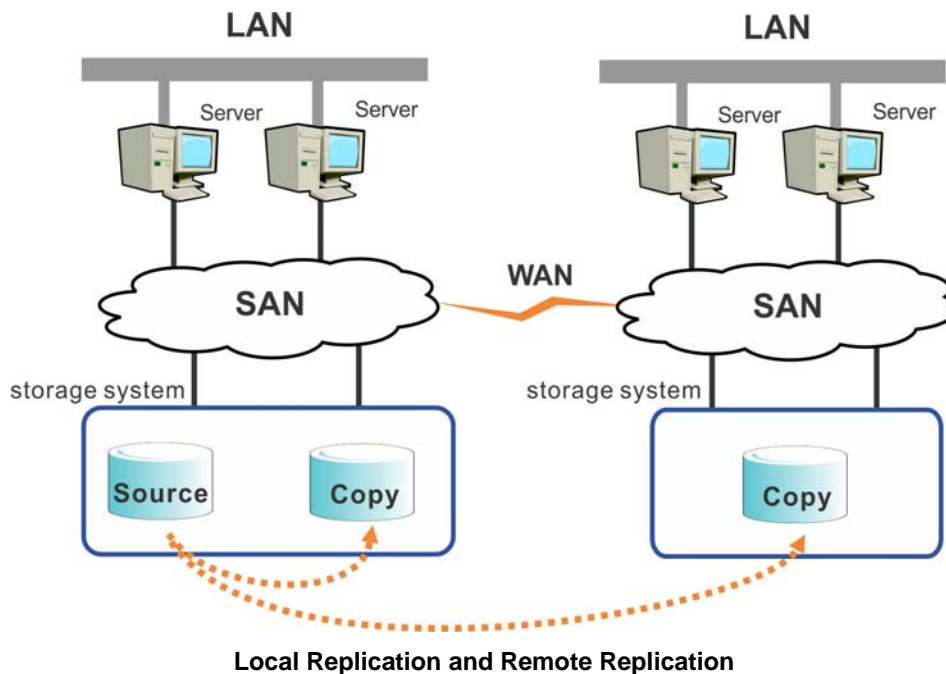


## Remote Replication Function

Remote replication capability allows users to create full data copies across storage systems, including in synchronous or asynchronous mode. If source data fails due to system malfunctions or disasters, users can leverage the disk-based remote copy to restart service within only minutes. If the source needs to resume its role, it can be quickly synced with the remote copy for only differentials.

To further ensure the integrity of the remote data, remote replication allows users to protect the remote copy with snapshot technology. Granular snapshot images can help restore the corrupt remote copy in seconds when it needs to resume business service.

Remote replication is available on selected models in the EonStor DS family.

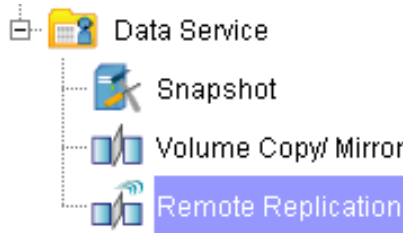




## System Configurations in SANWatch (EonStor DS Management Software)

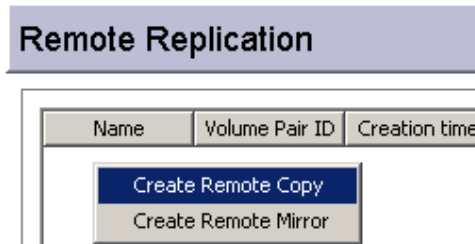
Achieving remote replication is very easy with the SANWatch management software. To create a remote copy/mirror, please follow the steps below:

**1.** In SANWatch, go to: *Storage Manager > Device > Data Service > Remote Replication*.

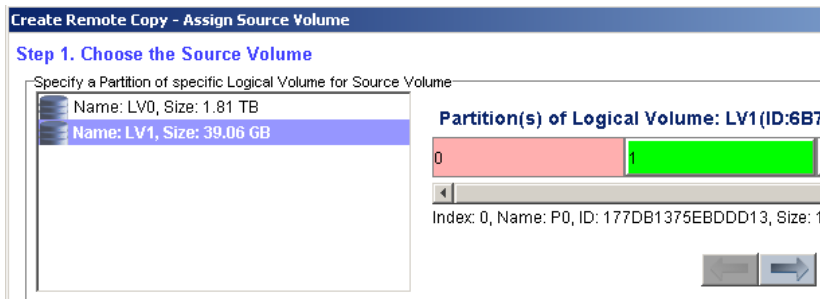


**2.** Discover both the EonStor DS system for source volume and the EonStor DS system for target volume (for detailed information, please refer to the user manual).

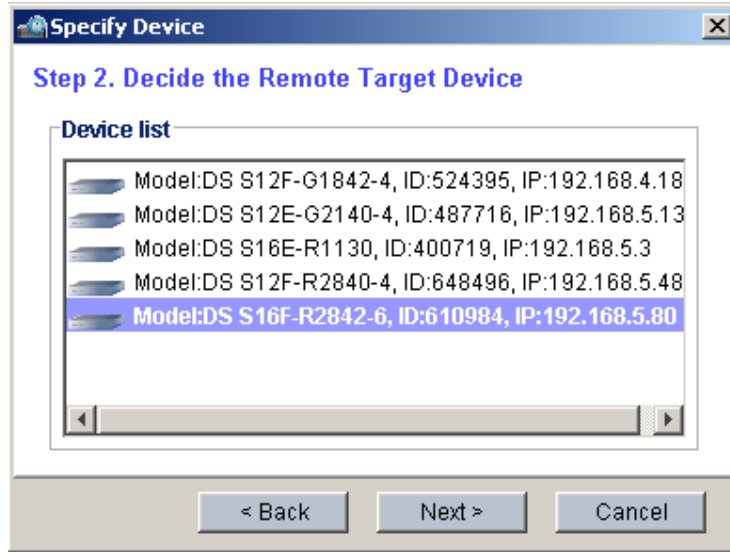
**3.** In the *Remote Replication* corner, right-click and select *Create Remote Copy* or *Create Remote Mirror*.



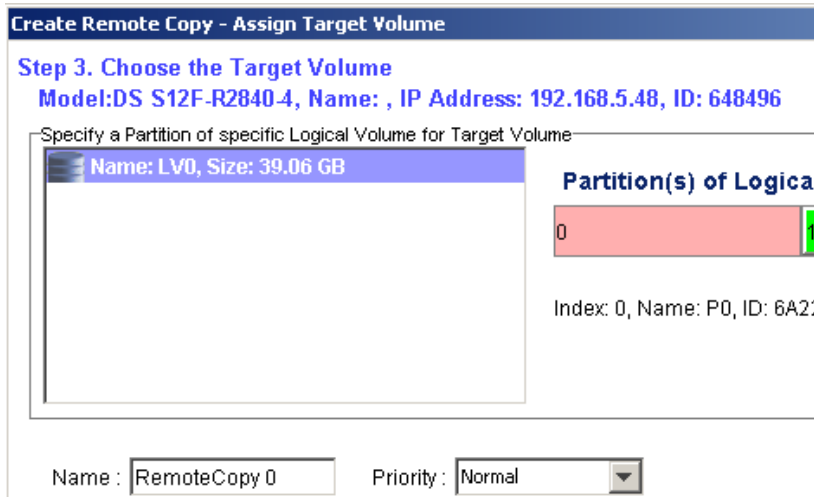
**4.** Choose the source logical volume from the list, and specify which partition you need to copy using the left/right arrow buttons. Then click *Next*.



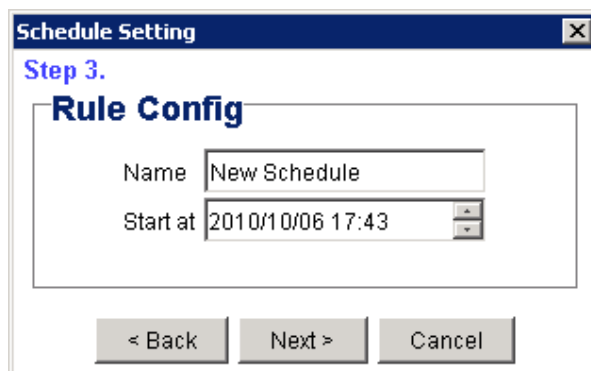
**5.** Choose the remote subsystem in which the target logical volume resides.



**6.** Specify to which partition the source volume will be copied using the left/right arrow buttons. Set the parameters.



**7.** If you have selected a remote copy to start copying at a specific time, enter the start date and click *Next*.





**8.** For remote mirror, you may choose *Asynchronous Mode* to allow the mirroring to occur during off-peak hours (for detailed information about the synchronous and asynchronous options, please refer to the user manual).

- Asynchronous Mode
- Compress Data Before Transmitting
- Support Incremental Recovery

**9.** The summary of the remote copy/mirror will appear. Confirm the content and click *OK*.

**Summary**

Type	Remote Copy
Name	RemoteCopy 0
Incremental Recovery	Supported
Source Volume	
LV ID	5A45A7E8311D0648
Partition	0
Size	10 GB
Target Volume	
Device ID	524383
LV ID	661E9D5D1BCE197F
Partition	0
Size	10 GB
Scheduler	

**10.** Remote copy/mirror will begin. After completion, the remote copy/mirror pair and its details will appear in the *Remote Replication / Source Detail / Target Detail* corner.

Remote Replication			
Name	Volume Pair ID	Creation time	Complete Time
RemoteCopy 0	707030420F...	Thu, Dec 16 ...	



### Source Detail

Item	Description
Volume Pair ID	707030420F9100D3
Volume Set ID	0FB7E0A51D577B14
LV Name	LVO
Partition Name	P0
Size	10 GB
Mapped	Yes

### Target Detail

Item	Description
Volume Pair ID	707030420F9100D3
Volume Set ID	0A6D331D6301C4FD
LV ID	661E9D5D1BCE197F
Partition Name	P0
Size	10 GB
Mapped	No